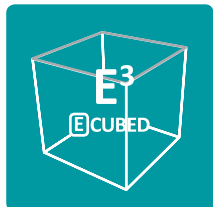


ECUBE9 **DIAMOND**

Continuous Innovation - Superior and Reliable



We maximize customer values with E-CUBE principles



- E xtreme Clarity
- E fficient Workflow
- E rgonomic Design

The ALPINIONE-CUBE series continues to evolve through unique and reliable technological breakthroughs.

*The E-CUBE 9 DIAMOND integrates ALPINIONE's core imaging technologies to provide **uniform and fundamentally excellent image quality** across the whole product lifetime.*





© Southwest Diamond Cutters



ALPINION's unique single crystal process



ALPINION's single crystal transducer
with covered acoustic technology



The outstanding quality of E-CUBE 9 DIAMOND results from **a refined acoustic technology** with great delicacy that manages and handles ultrasound signals perfectly.

ALPINION's **unique and flexible imaging platform, Flexcan™ Architecture**, enhances system stability and helps to maintain system performance to the latest software version. The reliable imaging platform guarantees uniform image quality.

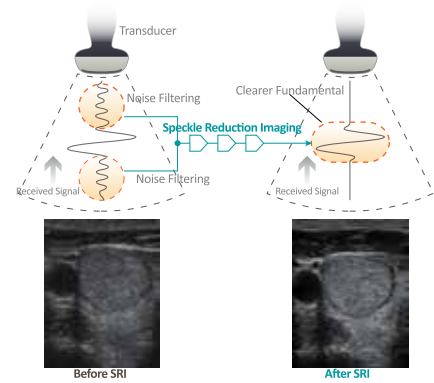
The unique imaging platform and proprietary acoustic technology of the E-CUBE 9 DIAMOND delivers **uniform image quality and crystal clear image performance** to clinicians.

The evolution of ALPINION's core imaging technology

ALPINION's innovative imaging platform (Flexcan™ Architecture) and sophisticated image processing technology set (Optimal Imaging Suite™) provide a consistent and high-quality image performance that is ideally suited to a dynamically changing work environment.

Flexcan™ Architecture

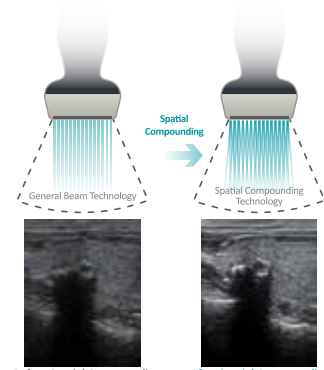
ALPINION's unique ultrasound imaging platform (Flexcan™ Architecture) is a software driven structure that ensures stable imaging performance, easy software upgrades and uniform image quality throughout the whole product lifetime.



[Speckle Reduction Imaging technology]

Optimal Imaging Suite™

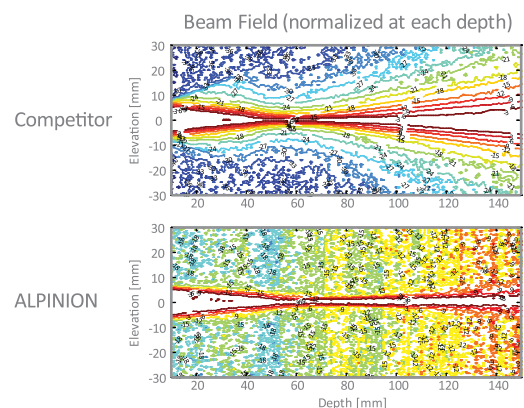
ALPINION's integrated post-processing technology set (Optimal Imaging Suite™), embedded in the E-CUBE 9 DIAMOND, creates optimized images for each application by effectively decreasing artifacts and enhancing the borderline of each organ.



[Spatial Compounding technology]

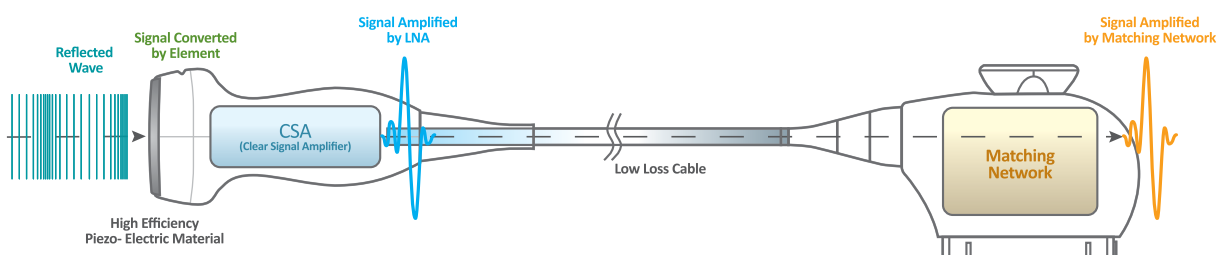
Crystal Signature™

ALPINION's unique acoustic engineering produces a superior beam-field pattern that provides a uniform image performance. ALPINION's specialized single crystal technology produces a characteristically sharp and deep elevation beam focus. The innovative single crystal technology is characterized by a higher energy conversion efficiency than conventional piezo-ceramic materials that provides greater uniformity and sensitivity. The focused beam pattern, produced by ALPINION's single crystal technology (Crystal Signature™), results in high-resolution image, wide-bandwidth images, and deep penetration.



SensitiView™

ALPINION's unique and proprietary acoustic technology, SensitiView™, encompasses the CSA™ (Clear Signal Amplifier), low loss cable and matching technology with system. The CSA™ generates an enriched purified signal with active electronics from high-quality piezo-electric materials. The high-performance low loss cable transfers high-sensitive signals for optimum impedance matching with the system. The results is significantly enhanced sensitivity and high-resolution images.





DIAMOND

Carotid
2D
P 80
Frq
Gn 3
DR 6
D 3.1
CF
P 90
Frq
Gn 2
WF
Per
3.6k
PW
P 90
Frq
Gn 4
WF
5.4k
2.0m
-60°
cm/s

Clear
Measure
Preset
Harmonic
Xpress
TMI
Parascanic
Depth
Focus
Zoom
P1
P2
TMI
Kern Mode
Update
P0
2D
P0
P1
P2

Q W E R T Y U I O P
A S D F G H J K L ; ' < > ?
Z X C V B N M , . / : ; ' < > ?
Esc F1 F2 F3 F4 F5 F6 F7 F8 F9 F10 F11 F12
Ctrl Alt Enter End Del
Space Tab

1 2 3 4 5

Efficient diagnostic flow

Further uniform image performance, the efficient workflow adds to the performance perfection of the E-CUBE 9 DIAMOND.

The E-CUBE 9 DIAMOND enhances user value in each phase of daily practice, from patient registration to clinical review, as well diagnostic confirmation. The E-CUBE 9 DIAMOND fine-tunes its imaging technology, dedicated application software and built-in features for an optimized diagnostic flow.



Clinician's value :

- **Minimizes the time and effort to register a patient.**

Solution • Quick ID

Simplifies patient registration process by basic information only. (patient ID, name, year of birth and gender).

Clinician's value :

- **Application-specific software to maximize diagnostic confidence**
- **Easy operation through an intuitive user interface**

Solution • Auto IMT

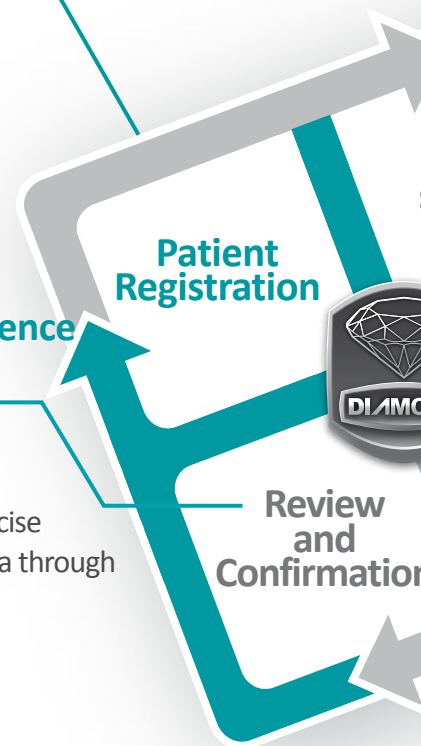
Carotid scanning observes early stage arteriosclerosis. ALPINION's Auto IMT software enables accurate, automatic and precise measurements of the thickness of the upper and lower intima-media through a single line near the intima.

- **Live HQ™**

The combination of qualified 3D/4D transducers with strong performance reliability of geometrical accuracy enables ALPINION's Live HQ™ software to render a realistic fetal shape. The innovative illumination effect enhances the diagnostic confirmation of a morphological examination.

- **CUBE Strain™**

ALPINION's strain imaging enables the quantitative and objective evaluation of myocardial contractions. CUBE Strain™ detects velocity gradients and helps clinicians analyze regional myocardial function.





Clinician's value :

- Minimizes the time and effort to register a patient.

Solution • Power User Preset

Quick mode transition based on pre-specified user presets that include probe selection, assigned specific function and image parameters.

Clinician's value :

- Image optimization with minimal operation steps.

Solution • Xpeed™

Xpeed™ optimizes images in B-mode, color flow and Doppler mode with one button operation.

- FullSRI™

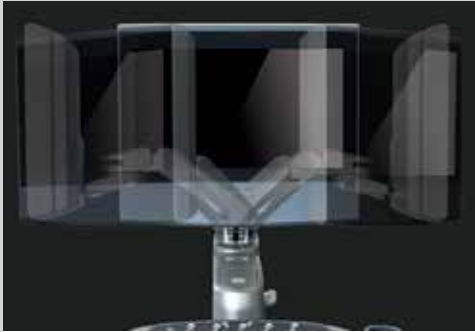
ALPINION's unique speckle reduction filtering technology (FullSRI™) removes artifacts and enhances tissue edges with a high-resolution contrast.

- SCI (Spatial Compounding Image) and FCI (Frequency Compounding Image)

The SCI and FCI provides higher contrast, less artifacts and more uniform images (from near field to far field) by steering multiple beam angles and combining ultrasound data from different frequencies.

Innovation is born when design cares daily practice

19" Wide LED Monitor



- A high-quality and wide LED monitor required for medical reviews

Articulated Monitor Arm

- A 360-degree articulated arm for unhindered interaction with patients

Built-in Gel Warmer

- Built-in Gel warmer for added patient comfort

Lightweight transducer with excellent grip

- MicroFit™ technology, ALPINION's unique design technology for optimal scan conditions
- Lightweight transducer and flexible cable
- Comfortable use and minimal user fatigue

Control Panel Up-and-down and Swiveling



- Easy console height adjustment
- A 50-degree swiveling control panel

Micro-Pinless Transducer Connectors



- Micro-pinless typed transducer connector to remove any signal interference
- Anti-dust connector door

Defining pure and high resolution images



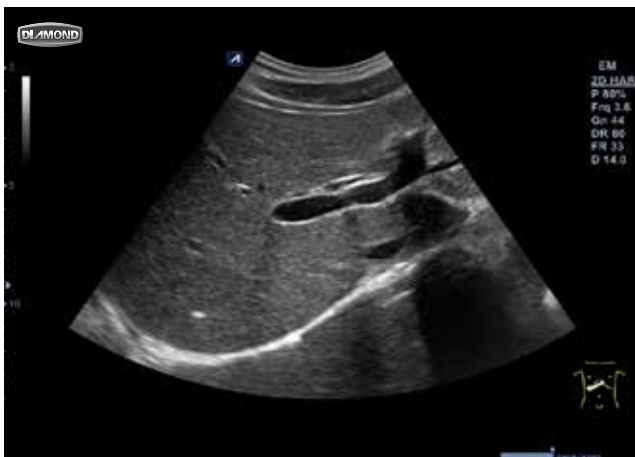
- Optimized for abdominal scans

- Excellent performance in B/C/Doppler mode
- Deeper penetration with high-sensitivity image from Crystal Signature™ technology
- A wide selection of transducers that include various high-density convex transducers

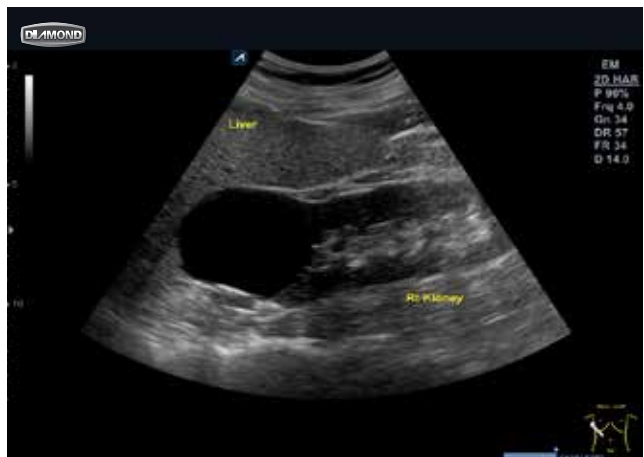


The E-CUBE 9 DIAMOND features advanced single crystal transducers for deep penetration, wider bandwidth and high-sensitivity images. The results are exceptional even from high-volume patients.

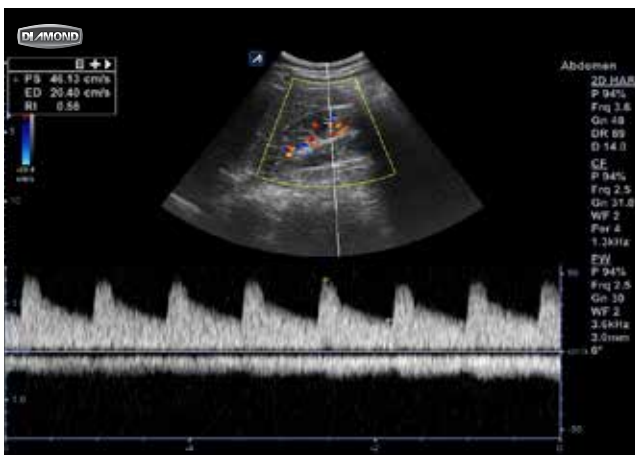
Found in high-end systems, the high-density convex transducer of the E-CUBE 9 DIAMOND heightens diagnostic confidence and offers uniform high-resolution images in every abdominal examination.



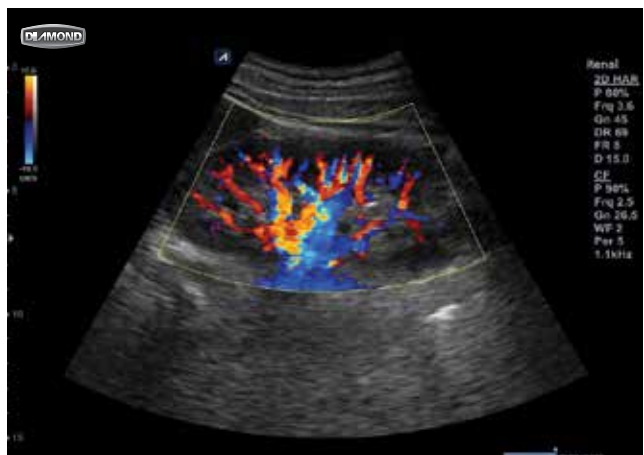
Intrahepatic Calcification



Right Kidney



Renal Spectrum

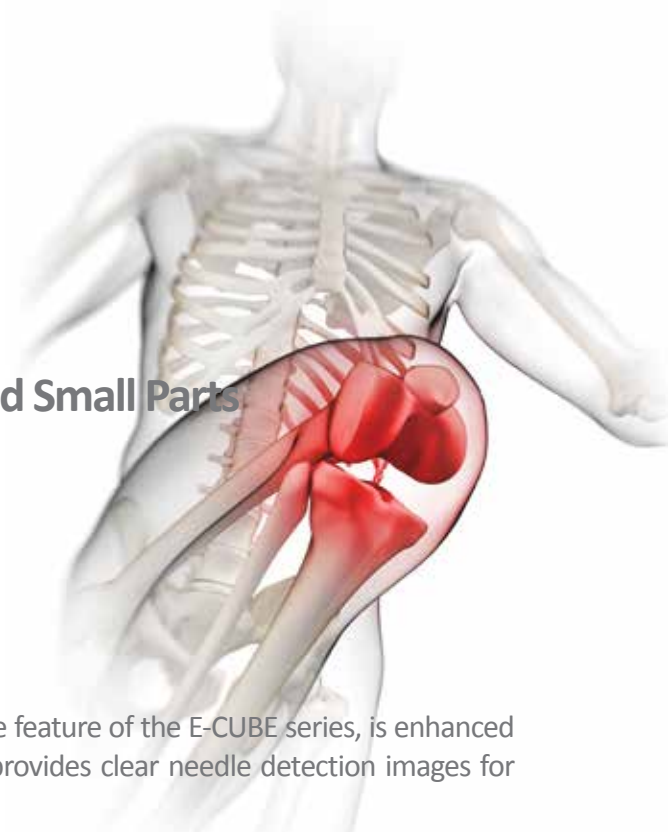


Renal Color Flow



- Renowned performance for MSK, Orthopedic, Pain Management and Small Parts

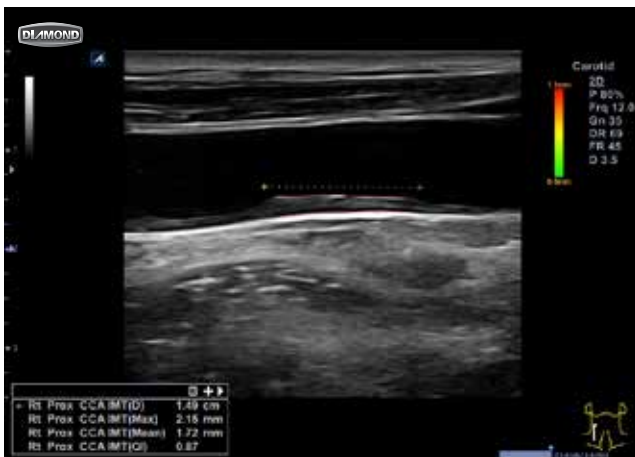
- Superior B/C/Doppler performance
- Clear needle detection imaging
- A wide range of linear transducers



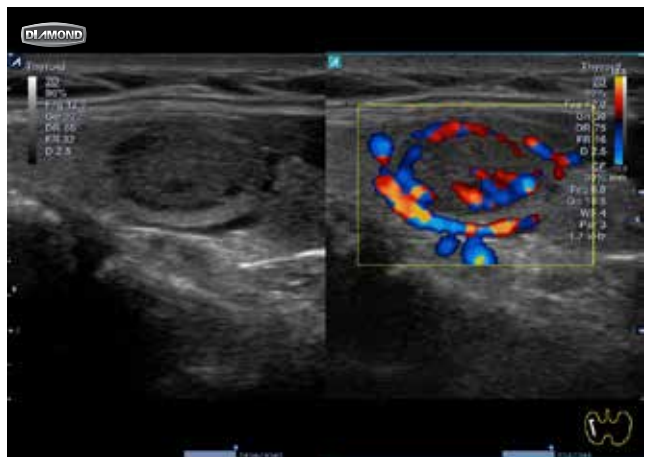
ALPINION's excellent linear transducer performance, a signature feature of the E-CUBE series, is enhanced by the E-CUBE 9 DIAMOND. Its qualified image performance provides clear needle detection images for accurate FNA (Fine Needle Aspiration) and needle injection.

The E-CUBE 9 DIAMOND offers the widest range of linear transducers, from the hockey stick to the wide footprint linear transducer.

This optimal transducer portfolio assists in the clinician's diagnostic specialty.



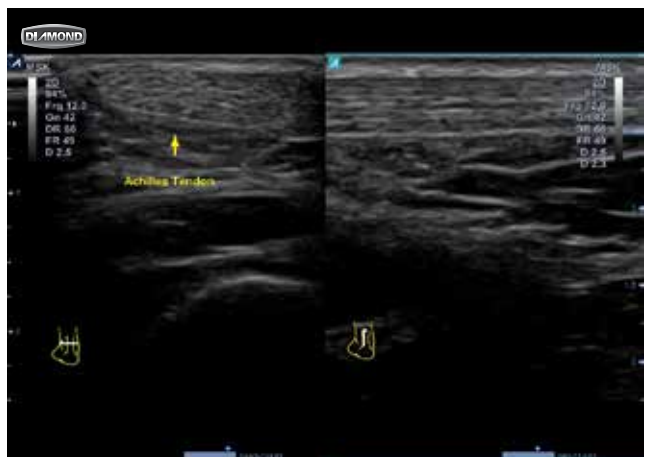
Auto IMT to thickened IMT



Thyroid Mass Live Dual view



Ulna Olecranon Fossa



Achilles Tendon



- Optimized solutions for precise women's health exams

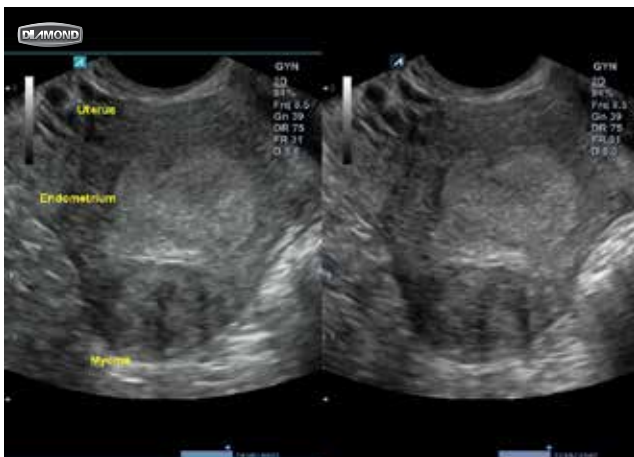
- Intuitive and lucrative 3D/4D software (Volume Master™)
- Superb and realistic fetus images rendered by Live HQ™
- Full transducer portfolio for women's health, from breasts to 3D/4D



The E-CUBE 9 DIAMOND provides optimized clinical solutions for all types of women's health exams through outstanding image performance and intuitive workflow.

ALPINION's technological breakthroughs create the world-first single crystal volume convex transducer and the high performance 60mm wide linear transducer for breast exams.

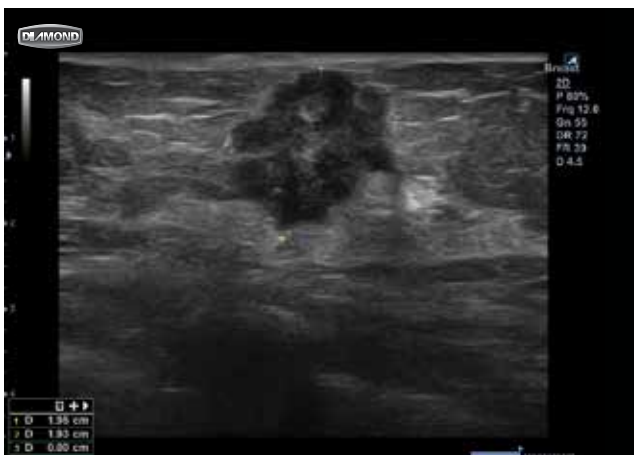
Volume Master™, ALPINION's intuitive 3D/4D software, offers fast rendering speed and outstanding rendering quality. The innovative rendering technology, Live HQ™, provides realistic fetus images and fosters maternal-fetal bonding.



Uterus Myoma



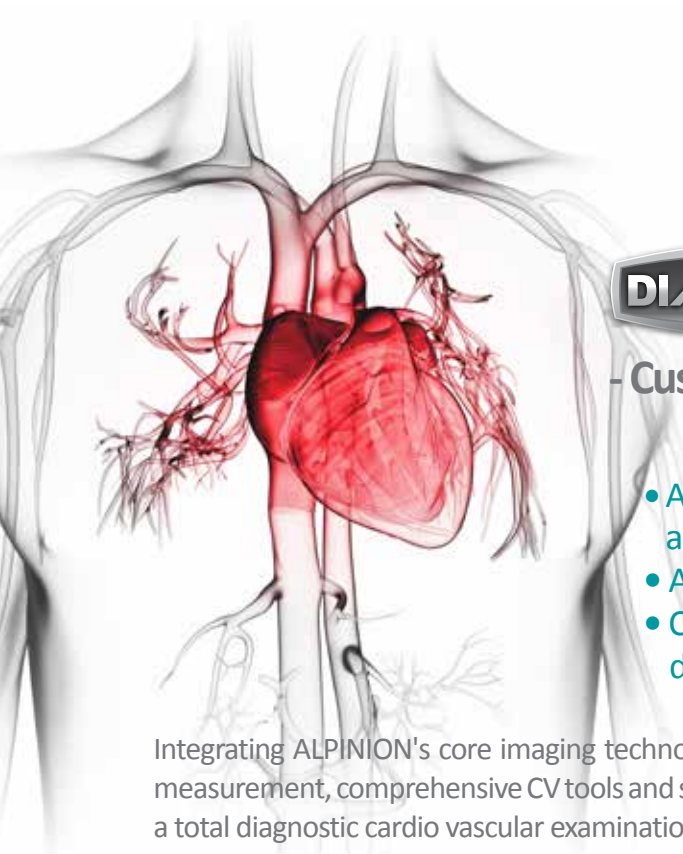
Fetal Heart in 4 Chamber view



Breast Mass



Fetal Face Rendering (Live HQ™)



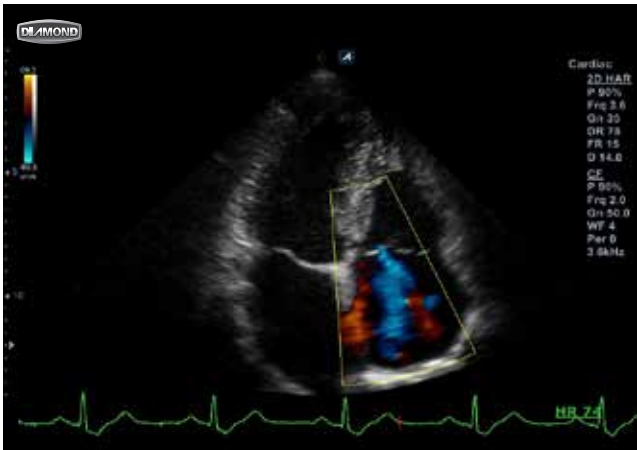
- Customized package for cardio-vascular exams

- Application dedicated transducer sets, from pediatric to adult cardiac exams
- Accurate measurement packages and report function
- Comprehensive CV tools and software to support diagnostic decisions

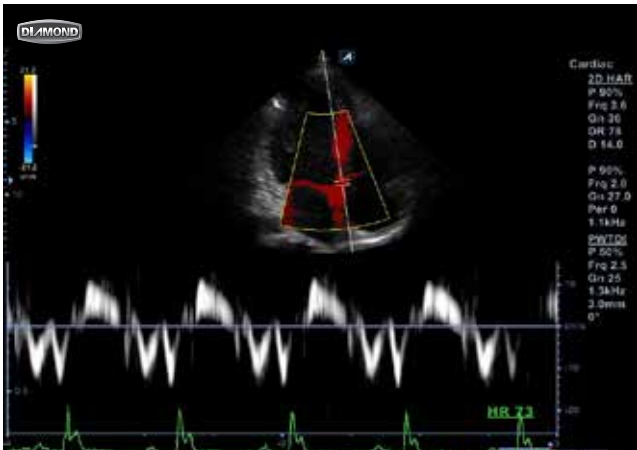
Integrating ALPINION's core imaging technology, a wide range of CV specialized transducer sets, accurate measurement, comprehensive CV tools and structured connectivity, the E-CUBE 9 DIAMOND offers clinicians a total diagnostic cardio vascular examination solution.

The E-CUBE 9 DIAMOND provides a wide selection of transducer sets, from single crystal adult and pediatric cardiac transducers to the peripheral deep vascular-specialized transducer.

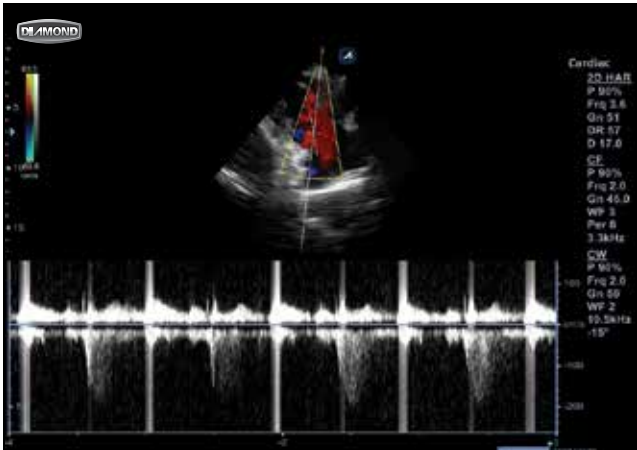
The full CV measurement package and CV-specialized tools (ECG, CUBE Strain™, Stress Echo and Auto IMT) support more precise cardio-vascular examination. A streamlined workflow with the seamless connectivity of DICOM 3.0, the modality worklist and the DICOM Cardiac SR guarantee clinicians reliable diagnostic efficiency in routine cardiac examination.



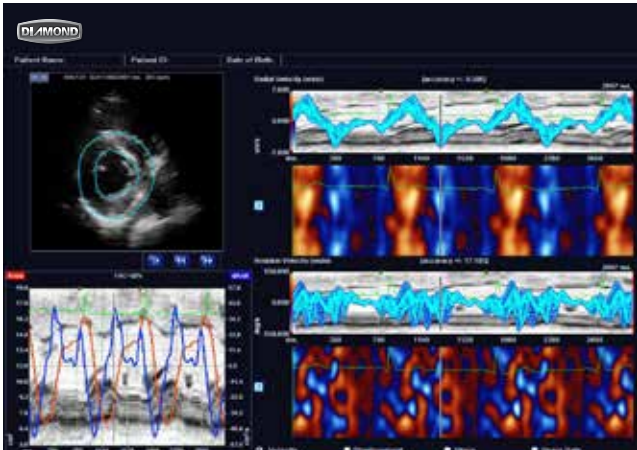
Tricuspid Regurgitation



Tissue Doppler Imaging



Tricuspid Regurgitation CW








CUBE Strain™

Premium class transducers







ALPINION's uniform and fundamentally excellent image performance is the result of a unique and proprietary acoustic technology.

The E-CUBE 9 DIAMOND's premium class transducers provide clinicians with high definition image, excellent grip, easy contact and reliable performance.



Linear

| | | | | |
|---|--|--|--|--|
| <p>L3-12H</p>  | <p>L3-12H^{WD}</p>  | <p>L3-12</p>  | <p>L3-8</p>  | <p>IO3-12</p>  |
| <p><i>High-density linear array</i> Application : Vascular, Small Parts, Breast, Thyroid, MSK, Peripheral Vascular</p> | <p><i>Wide linear array (60mm)</i> Application : Breast, Thyroid, MSK</p> | <p><i>Linear array</i> Application : Vascular, Small Parts, Breast, Thyroid, MSK, Peripheral Vascular</p> | <p><i>Low frequency linear array</i> Application : Deep Vascular, Abdomen</p> | <p><i>Intraoperative linear array</i> Application : Intra-operative, Intra-Oral, Head & Neck, MSK, Vascular</p> |

Convex

| | | |
|--|--|--|
| <p>SC1-4HS</p>  | <p>SC1-4H</p>  | <p>SC1-6H</p>  |
| <p><i>Single crystal convex array, Wide angle, High-density</i> Application : Abdomen, OB/GYN, Fetal Echo</p> | <p><i>Single crystal convex array, High-density</i> Application : Abdomen, OB/GYN, Fetal Echo</p> | <p><i>Single crystal convex array, High-density</i> Application : Abdomen, OB/GYN, Fetal Echo</p> |
| <p>SC1-6</p>  | <p>C1-6</p>  | <p>C5-8</p>  |
| <p><i>Single crystal convex array</i> Application : Abdomen, OB/GYN, Fetal Echo</p> | <p><i>Conve xarray</i> Application : Abdomen, OB/GYN, Fetal Echo</p> | <p><i>Micro-convex array</i> Application : Pediatric Abdomen, Veterinary Medicine</p> |




Volume Convex

| | |
|---|--|
| <p>SVC1-6</p>  | <p>VC1-6</p>  |
| <p><i>Single crystal volume convex array</i> Application : Abdomen, OB/GYN, Fetal Echo</p> | <p><i>Volume convex array</i> Application : Abdomen, OB/GYN, Fetal Echo</p> |

Phased Array

| | |
|--|--|
| <p>SP1-5</p>  | <p>SP3-8</p>  |
| <p><i>Single crystal phased array</i> Application : Adult Cardiac, Deep Abdomen, Transcranial</p> | <p><i>Single crystal phased array</i> Application : Pediatric Cardiac, Neonatal</p> |

Endocavity

| | | |
|---|--|---|
| <p>E3-10H</p>  | <p>E3-10</p>  | <p>EN3-10</p>  |
| <p><i>High-density endocavity (Curved)</i> Application : OB/GYN, Urology</p> | <p><i>Wide band endocavity</i> Application : OB/GYN, Urology</p> | <p><i>Wide band (Curved)</i> Application : OB/GYN, Urology</p> |

Developed and
Manufactured
by

ALPINION



Fast
Repair



Low
Maintenance Cost



Best
Compatibility



Extreme Clarity
Efficient Workflow
Ergonomic Design

ALPINION promises to provide these three values to customers.
We are Ultrasound Professionals

E CUBE 9 

Real Time Ultrasound & Real Time Customer Service

NETCUBECARE™

ALPINION's E-CUBE system can be accessed by Net CUBE CARE™ service anytime for the efficient troubleshooting of system software.

Net CUBE CARE™, ALPINION's unique network-based remote service, efficiently upgrades (based on customer needs) the E-CUBE system by accessing and upgrading software. ALPINION's Net CUBE CARE™ customer service is optional – please contact the ALPINION customer service team at service@alpinion.com for further inquiries.

ALPINION MEDICAL SYSTEMS

Verdi Tower, 72, Digital-ro 26-gil, Guro-gu, Seoul, 152-848, Korea

Homepage www.alpinion.com

E-mail international@alpinion.com

TEL +82-2-3282-0900

FAX +82-2-851-5591

Copyright©2014 ALPINION MEDICAL SYSTEMS CO.,LTD. All rights reserved.
Catalogue contents may be partly changed without prior notice to customers due to performance enhancements.